

**STANDARD ARRIVAL
CHART INSTRUMENT
(STAR) - ICAO**

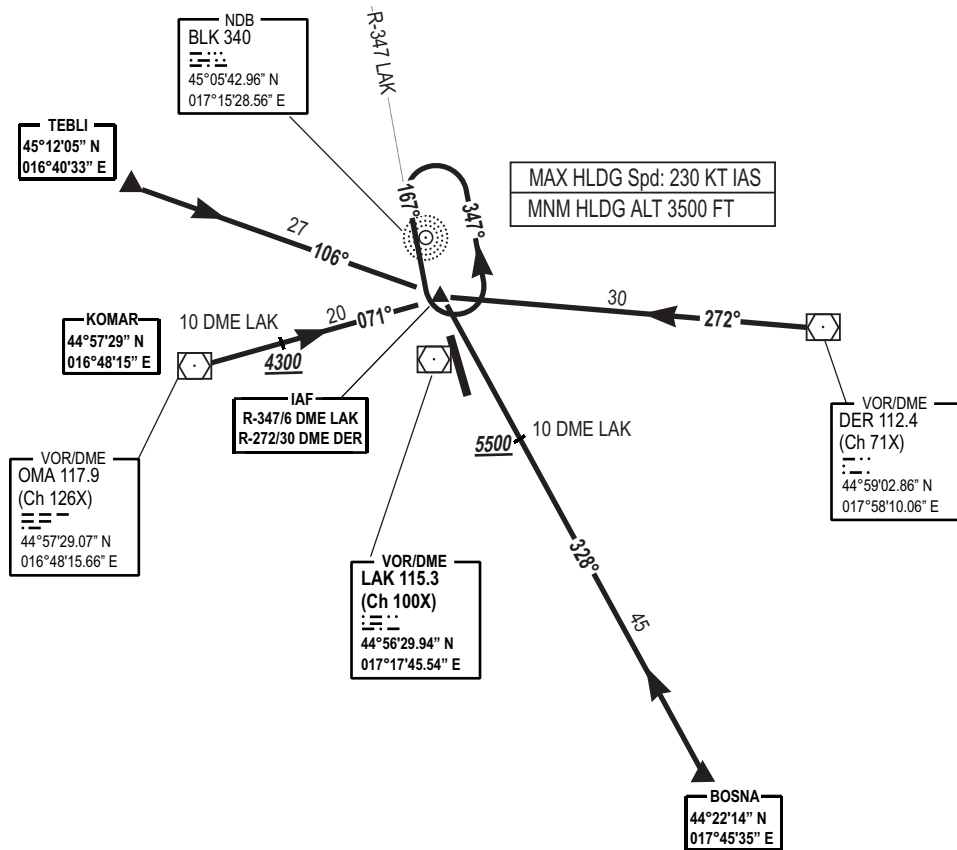
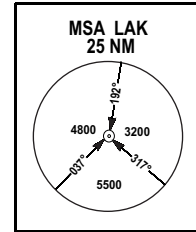
AD ELEV 401 FT

TRANSITION
ALTITUDE
10 000 FT
VAR 5°E (2020)

TWR/APP 133.075
SPARE 124.175

**BANJA LUKA (LQBK)
LAK STAR RWY 16/34**

CHG: MAG VAR, MAG BEARINGS & RADIALS, RWY DESIGNATORS, MSA BEARINGS, LAK STAR RWY 17/35 RENAMED TO LAK STAR RWY 16/34;



NOT TO SCALE

COORDINATES EXPRESSED IN WGS-84
BEARINGS, TRACKS AND RADIALS ARE MAGNETIC
ALTITUDES AND ELEVATIONS ARE IN FT
DISTANCES ARE IN NM

THIS PAGE INTENTIONALLY LEFT BLANK